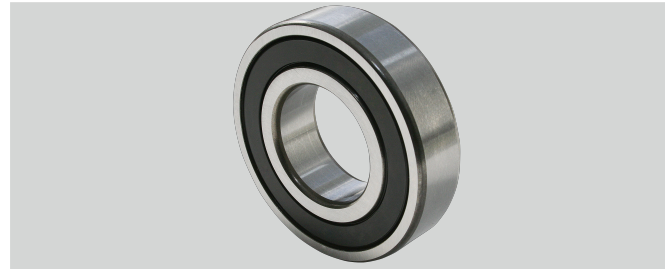
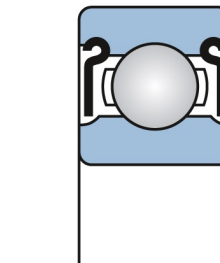
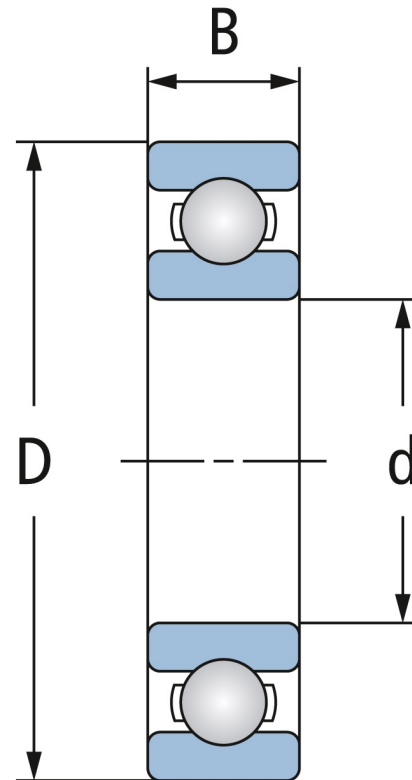


Marke: EBS

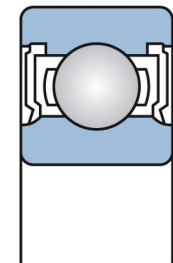


Lagerluft	C0 - Normal
D (mm)	42
d (mm)	20
Temperaturbereich	-25°C bis 120°C
Material	Wälzlagerstahl 100Cr6
Dichtungsart	2RS - beidseitig schleifend (Kunststoff)
B (mm)	12



ZZ

Abgedeckt



2RS

Abgedichtet